



Light Sources

Firmware Update Guide

Version 1.1.0

Contents

1	Firmware Installation	3
1.1	Procedure	3
2	Support	8
2.1	Contact us	8

Firmware Installation

1.1 Procedure

Important Note: Be sure to update the *Doric Neuroscience Studio* to its [most recent version](#) before installing the new firmware.

1. Unplug the driver and USB cable.
2. Connect the power supply and turn ON the device.
3. Only then, connect the USB cable to the computer.

The USB cable must be connected after the driver is turned ON.

4. Make sure your software is updated. Go to our [website](#) to download the latest version.
5. Start the software *Doric Neuroscience Studio*.
6. In the software, click on **Hardware**, where a drop-down menu (Fig. 1.1) is shown.

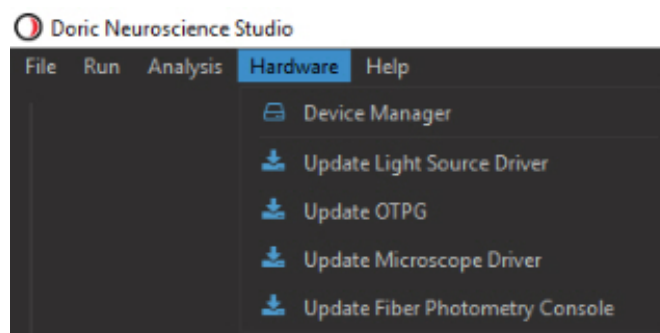


Figure 1.1: Hardware Drop-Down Menu

7. Click on **Device Manager**. This will show the connected device, and allow you to verify the firmware versions (for the **Motherboard** and **Channels**) installed on your device (Fig. 1.2). Verify that the versions you have to install are higher versions than the ones already installed.

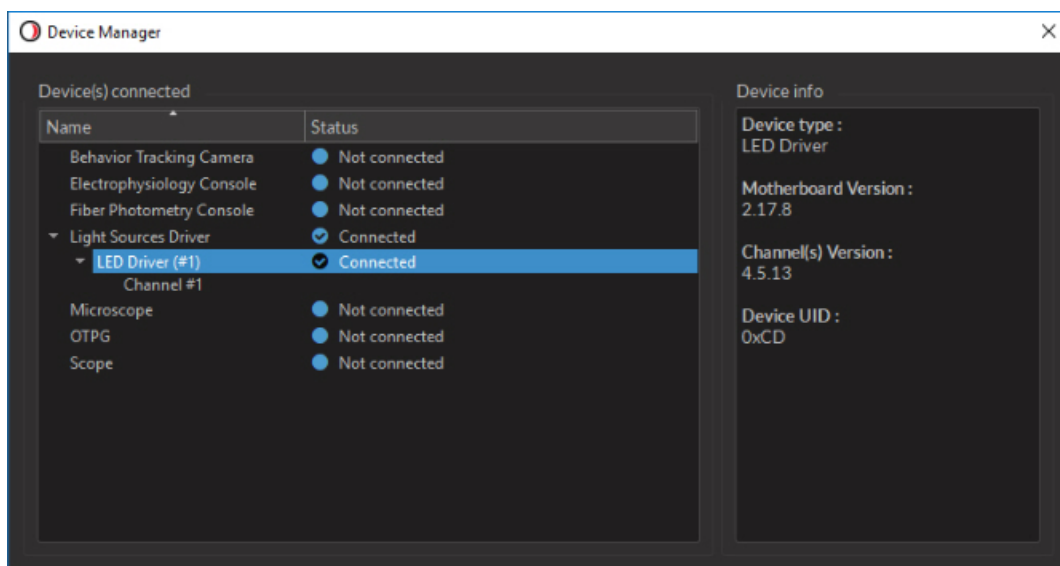


Figure 1.2: Device Manager

- Leave the **Device Manager** and return to the drop-down menu (Fig. 1.1). Click **Update Light Source Driver**. This will open the **Light Source Updater** (Fig. 1.3), showing the **Motherboard** tab.

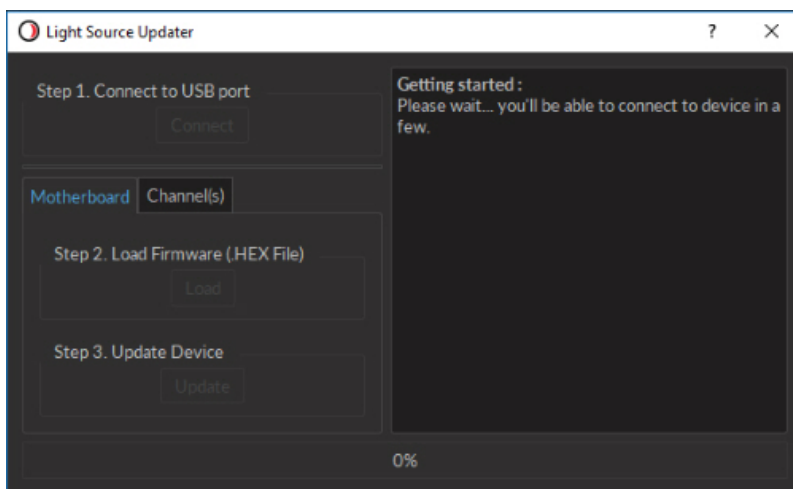


Figure 1.3: Firmware Updater Window

- Click the **Connect** button, which will connect the updater to the device (Fig. 1.4).

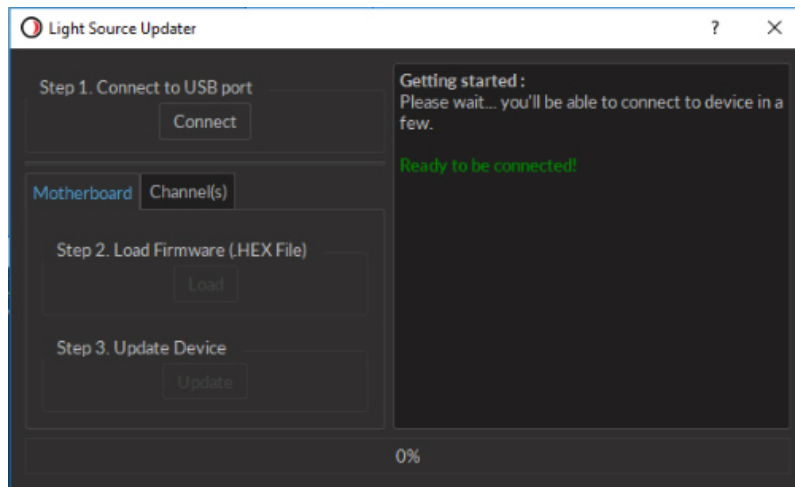


Figure 1.4: Firmware Updater, Connection

10. Click on **Load** and select the file with the name **DriverHybridMotherboard.production.X.Y.Z.hex**, where X.Y.Z is the version of the software.
11. After **.HEX File Loaded Successfully** appears, click on **Update** (Fig. 1.5) to begin the update process. The **Progression Bar** will show the advancement of the update in %.

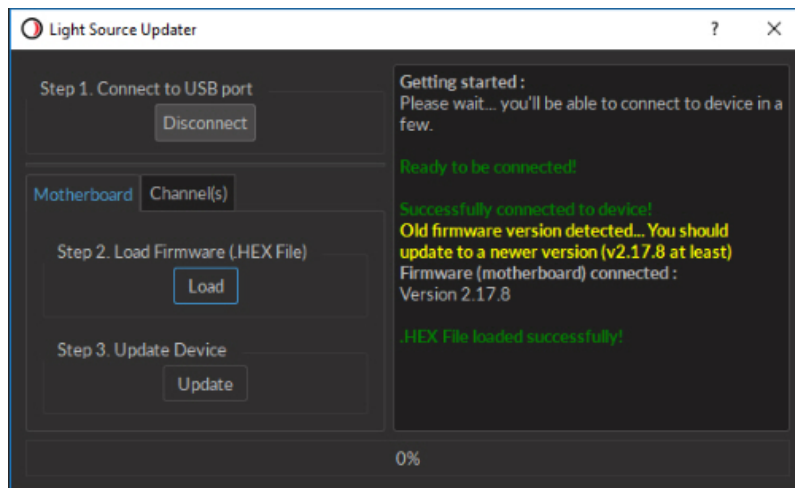


Figure 1.5: Firmware Updater, Update Motherboard Firmware

12. Once the motherboard update is completed, it will be possible to update the channels. Switch to the **Channels** tab.
13. Click on **Load** (Fig. 1.6) and load the file with the name **DriverHybridChannel.VX.Y.Z.production.hex**, where X.Y.Z is the version of the firmware.

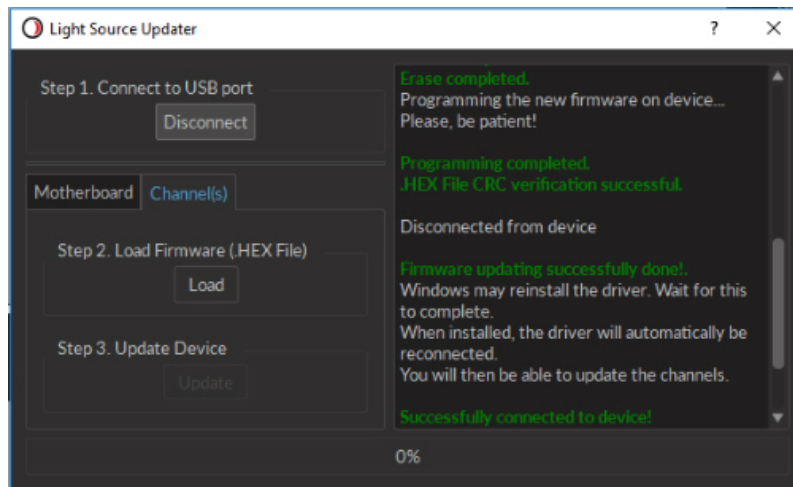


Figure 1.6: Firmware Updater, Load Channel Firmware

14. After **Hex File Loaded Successfully** appears, the firmware can be updated (Fig. 1.7).

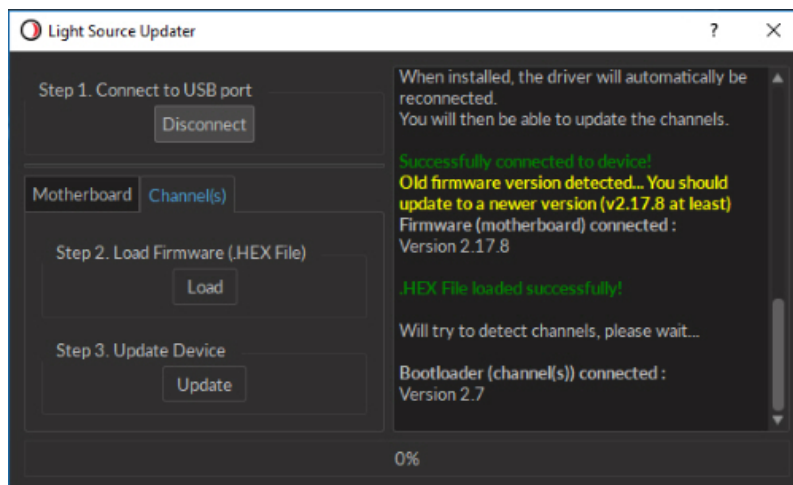


Figure 1.7: Firmware Updater, Update Channel Firmware

15. Once the update is complete, the window should show **Firmware updating successfully done!** (Fig. 1.8). Click on **Close** to end the process, then shut down and restart the device, then the software.

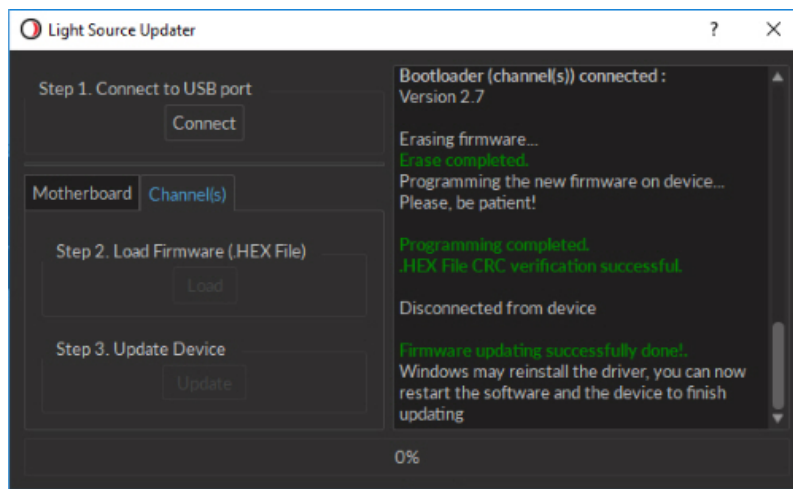


Figure 1.8: *Firmware Updater, Update Complete*

16. Once the software is restarted, return to the **Device Manager**. The updated device should show new versions of firmware.

Support

2.1 Contact us

For any questions or comments, do not hesitate to contact us by:

Phone 1-418-877-5600

Web doriclenses.com/contact

Email sales@doriclenses.com



© 2018 DORIC LENSES INC

357 rue Franquet - Quebec, (Quebec)
G1P 4N7, Canada

Phone: 1-418-877-5600 - Fax: 1-418-877-1008

www.doriclenses.com