



Fiber Photometry Console

Firmware Update Guide

Version 2.1.1

Contents

1	Firmware Installation	3
1.1	Procedure	3
2	Support	8
2.1	Contact us.....	8

Firmware Installation

IMPORTANT NOTE

Be sure to update the *Doric Neuroscience Studio* to its [most recent version](#) before installing the new firmware.

*** Firmware Update should be done with a computer running on Windows 10. We do NOT recommend to do firmware update with computer running Windows 7 or 8 version ***

1.1 Procedure

In order to update your devices, please follow the procedure below:

1. Unplug the driver and USB cable.
2. Connect the power supply and turn ON the device.
3. Only then, connect the USB cable to the **USB** port of the driver (next to 12 V input on the right side on Fig. 1.1) and to the computer. Do not connect to the **Service** USB-B input.



Figure 1.1: Connections behind the Fiber Photometry Console

The USB cable must be connected after the driver is turned ON.

4. Make sure your software is updated. Go to our [website](#) to download the latest version.
5. Start the software *Doric Neuroscience Studio*.
6. In the software, click on **Hardware** and **Update Fiber Photometry Console** (Fig. 1.2).

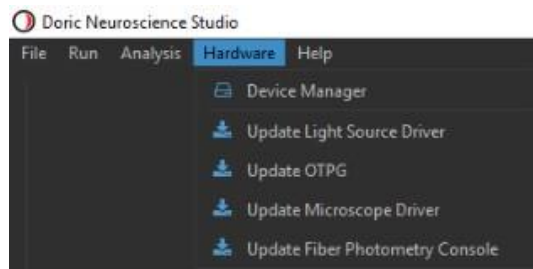


Figure 1.2: *Update firmware in the Hardware menu*

- With the Firmware update window opened, the **Motherboard Update** tab will be the first visible. Click on **Connect** (Fig. 1.3) once **Ready to connect** is visible.

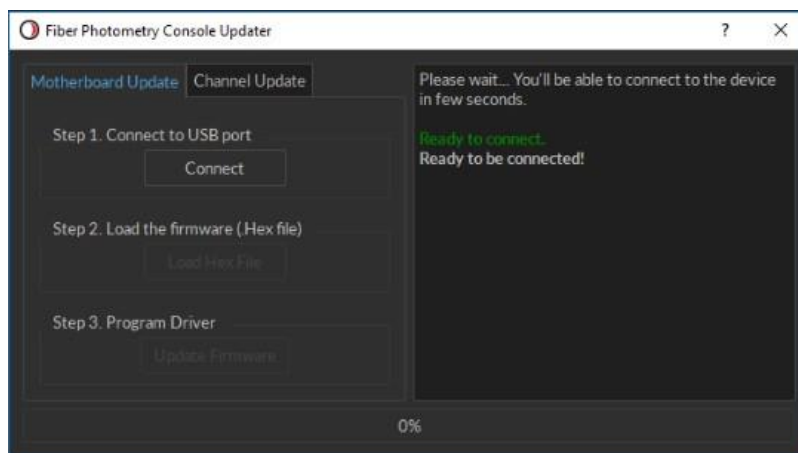


Figure 1.3: *Motherboard update tab*

- Click on **LoadHexFile** (Fig.1.4) and select the file with the name DriverHybridMotherboard.production.X.Y.Z.hex, where X.Y.Z is the file version.

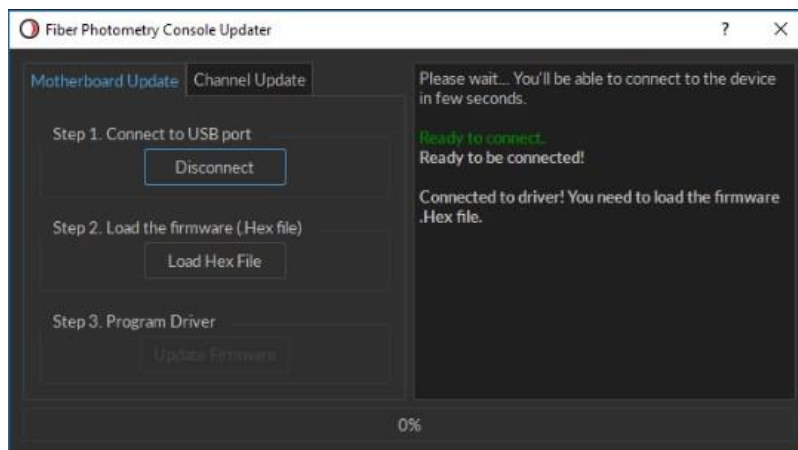


Figure 1.4: *Load files for updating firmware*

- Once **Hex file loaded successfully** is written, click on **Update Firmware**.

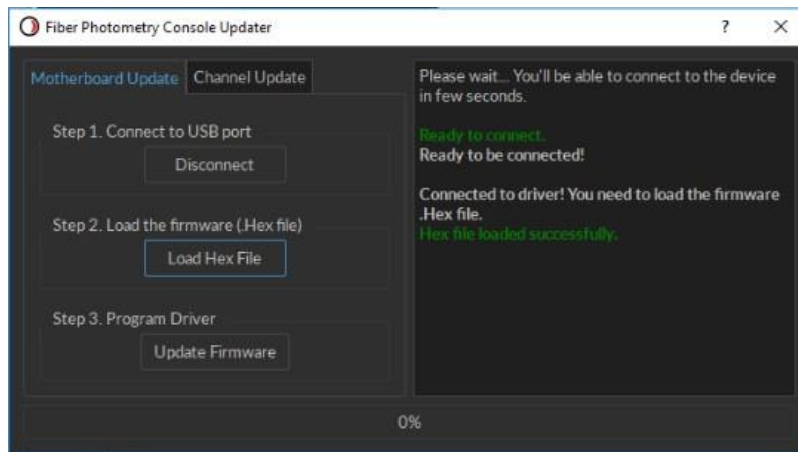


Figure 1.5: File loaded for updating firmware

10. Wait until the update is done. Windows may have to re-install the console's driver, which can take a while. When the update is completed, you should read **Programming completed. Verification successful** as in Fig. 1.6.

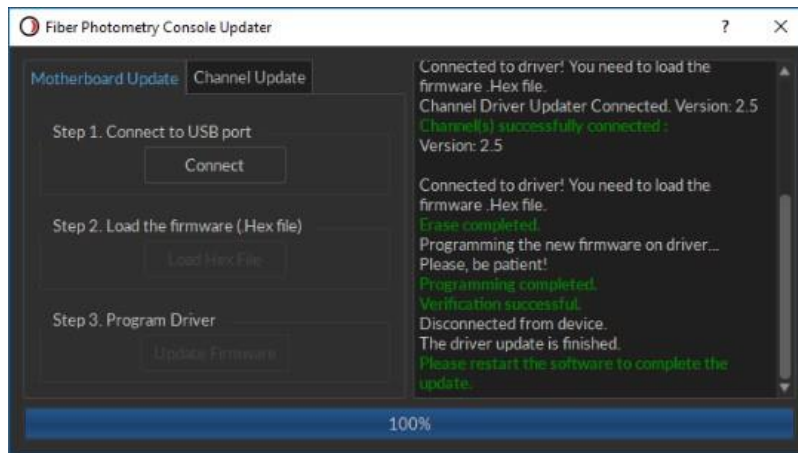


Figure 1.6: Motherboard Update successful

11. Go to the **Channel Update** tab.

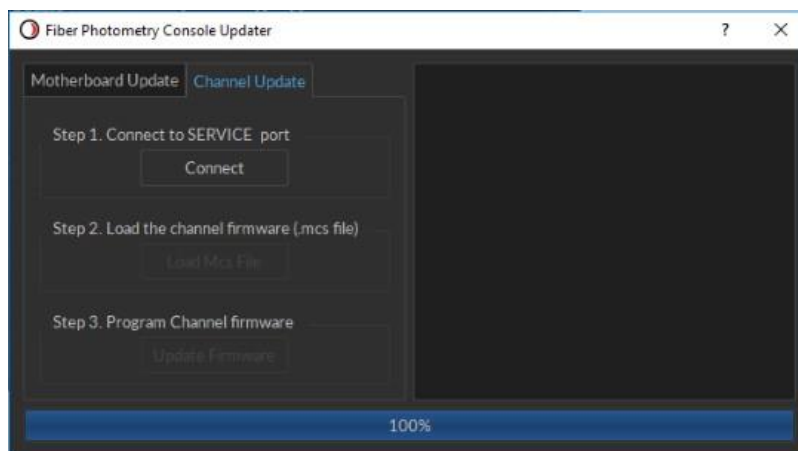


Figure 1.7: Channel update tab

12. Disconnect the USB cable from the **USB** port on the console.

13. Connect the USB cable to the **SERVICE** port on the console (left side on Fig. 1.1).
14. In the **Channel update** tab, click on **Connect** (Fig. 1.7).
15. Click on **Load Mcs File** and select the file with the name FPC vX.Y.Z.mcs, where X.Y.Z is the file version.

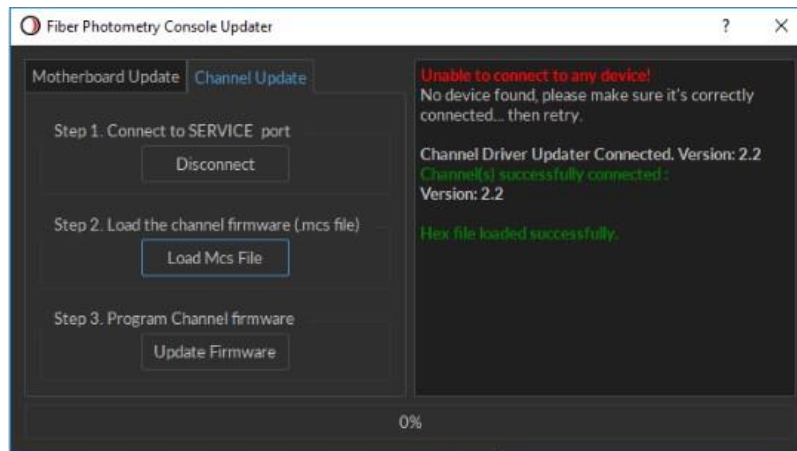


Figure 1.8: Load files for updating firmware

16. Once **Hex file loaded successfully** is written, click on **Update Firmware** (Fig. 1.8).

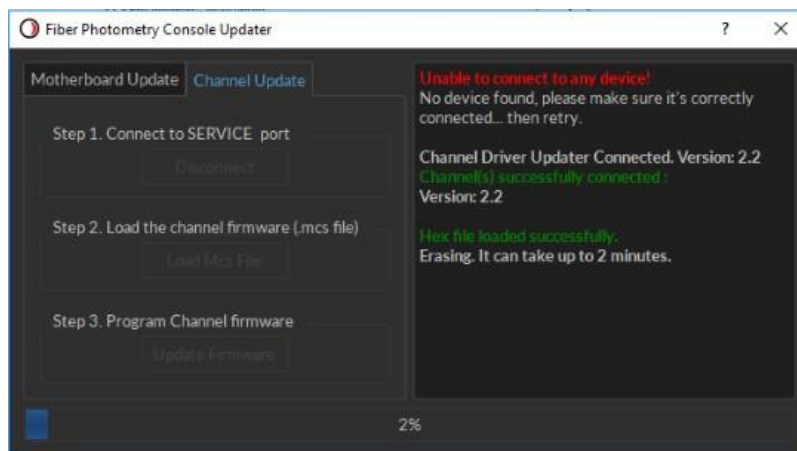


Figure 1.9: Erase files for updating firmware

17. When the update is completed, the system will show **Programming completed Verification successful** (Fig. 1.10). Wait until the update is done. Windows may have to re-install the console's driver, which can take a while (5 minutes).

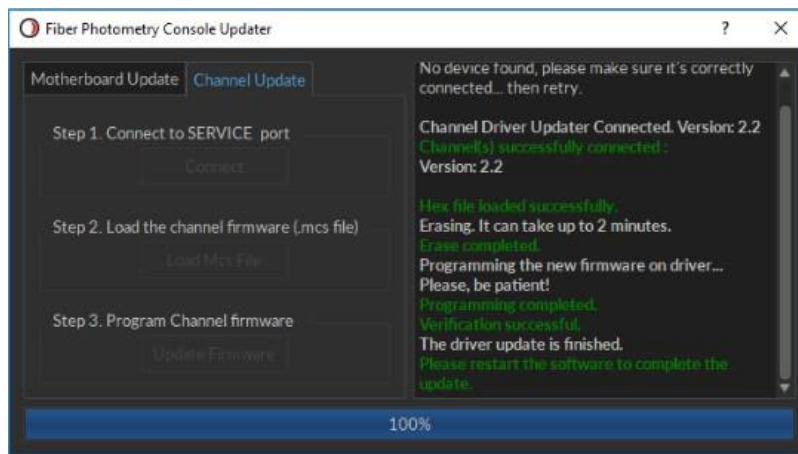


Figure 1.10: Update Complete

18. Close the Firmware Update window.
19. Disconnect the USB cable from the **SERVICE** port.
20. Turn off the device.
21. Restart the software
22. Turn on the device.
23. Connect the USB cable in the **USB** port of the driver.
24. To ensure that you have updated the firmware correctly, go to **Hardware / Device Manager** (Fig. 1.11) and select your device and channel. The motherboard and channel version are written.

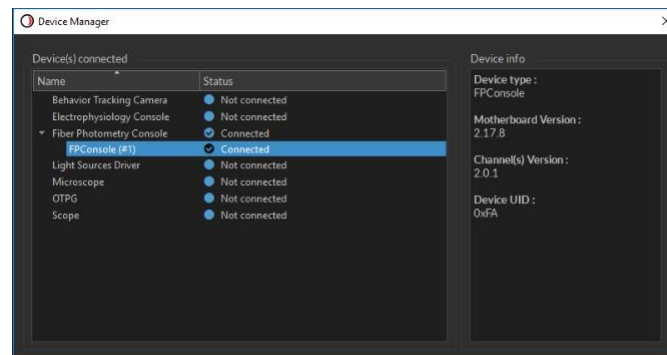


Figure 1.11: Device manager

Support

2.1 Contact us

For any questions or comments, do not hesitate to contact us by:

Phone 1-418-877-5600

Web doriclenses.com/contact

Email sales@doriclenses.com



© 2020 DORIC LENSES INC
357 rue Franquet - Quebec, (Quebec)
G1P 4N7, Canada
Phone: 1-418-877-5600 - Fax: 1-418-877-1008
www.doriclenses.com