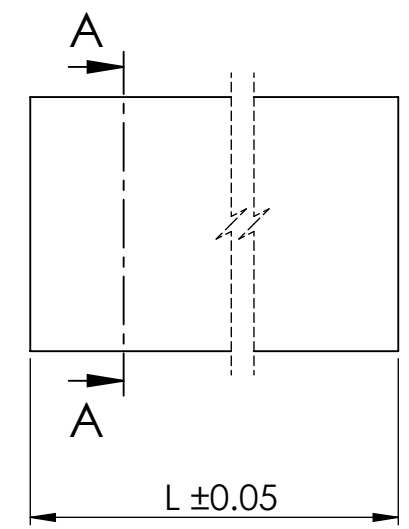
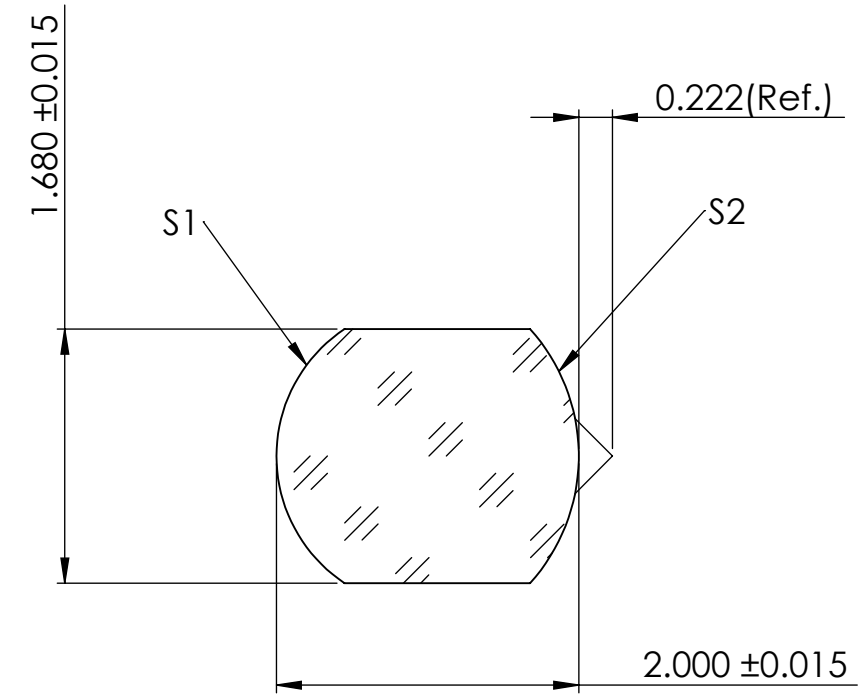
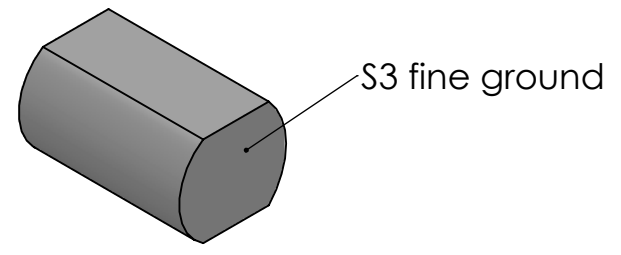


Acylindrical Equation

$$Z(y) = \frac{c^2 y^2}{1 + \sqrt{1 - (k + 1)c^2 y^2}} + \sum_{i=2}^8 A_{2i} y^{2i}$$



Acylindrical Coefficients

	S1	S2
R	0.735	1.009
c	1.3605	
k	-0.5270	
A <sub>2</sub>	0.0000	
A <sub>4</sub>	0.0000	
A <sub>6</sub>	5.5500 E-2	
A <sub>8</sub>	-2.1500 E-1	
A <sub>10</sub>	1.5450 E-1	
A <sub>12</sub>	0.0000	
A <sub>14</sub>	0.0000	

Sagittal Distances of Acylindrical Surface

Y (mm)	Z(mm)	
	S1	S2
0.0	0.00000	0.00000
0.28	0.03932	-0.05430
0.5583	0.16855	-0.22902

SECTION A-A  
SCALE 20 : 1

S1		Material/Lens Data		S2	
Radius of Curvature	0.2575 mm	Glass Type	Fused silica	Radius of Curvature	0.3538 mm
Clear Aperture	90%	n <sub>d</sub> / V <sub>d</sub>	1.45849 / 67.72	Clear Aperture	80%
Irregularity	λ/2 over CA	Focal length	1.461 mm ± 1%	Irregularity	λ/2 over CA
Centering	Not specified	Numerical Aperture	0.68	Centering	Not specified
Surface Quality	20-10	Design wavelength	808 nm	Surface Quality	20-10
Coating	None			Coating	None

Dimensions in mm  
For Information Purposes Only

PROPRIETARY  
THE INFORMATION CONTAINED IN THIS DRAWING  
IS THE SOLE PROPERTY OF Doric Lenses Inc..  
ANY REPRODUCTION IN PART OR AS A WHOLE  
WITHOUT THE WRITTEN PERMISSION OF  
Doric Lenses Inc. IS PROHIBITED.

DO NOT SCALE DRAWING

<b>doric</b>	doriclenses.com
TITLE: <b>ACL_DCX_RAC_INF_FS_EFL=1.461</b>	
DWG. NO. <b>D142-0375</b>	
16-8-2019	