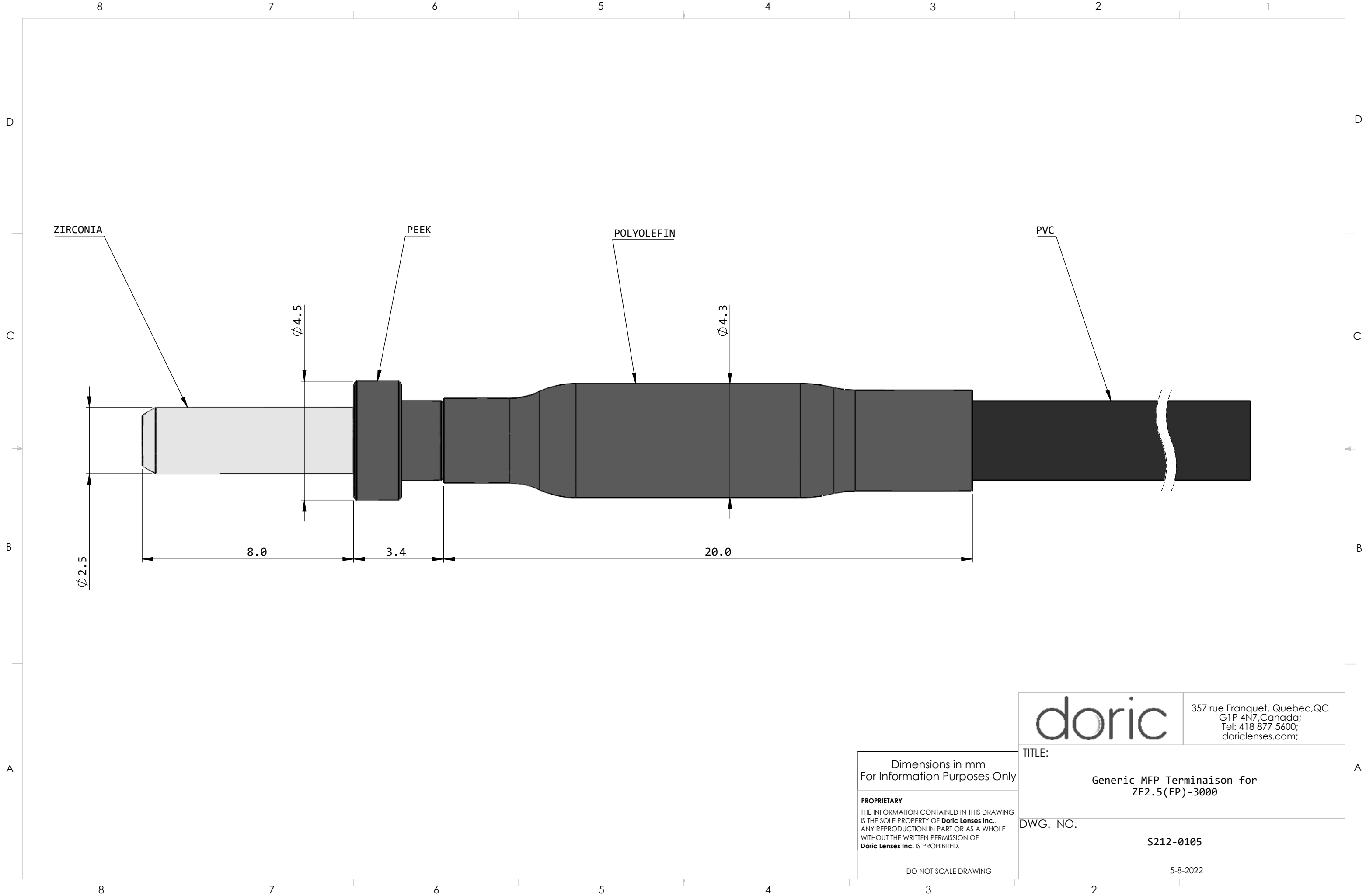
	357 rue Franquet, Quebec, QC G1P 4N7, Canada; Tel: 418 877 5600; doriclenses.com;
	TITLE: Generic MFP Termination for ZF2.5(FP)-1100 and less
DWG. NO.	S212-0103
DO NOT SCALE DRAWING	10-2-2022

Dimensions in mm
 For Information Purposes Only

PROPRIETARY
 THE INFORMATION CONTAINED IN THIS DRAWING
 IS THE SOLE PROPERTY OF **Doric Lenses Inc.**
 ANY REPRODUCTION IN PART OR AS A WHOLE
 WITHOUT THE WRITTEN PERMISSION OF
Doric Lenses Inc. IS PROHIBITED.



Dimensions in mm
For Information Purposes Only

PROPRIETARY
THE INFORMATION CONTAINED IN THIS DRAWING IS THE SOLE PROPERTY OF **Doric Lenses Inc.** ANY REPRODUCTION IN PART OR AS A WHOLE WITHOUT THE WRITTEN PERMISSION OF **Doric Lenses Inc.** IS PROHIBITED.

DO NOT SCALE DRAWING

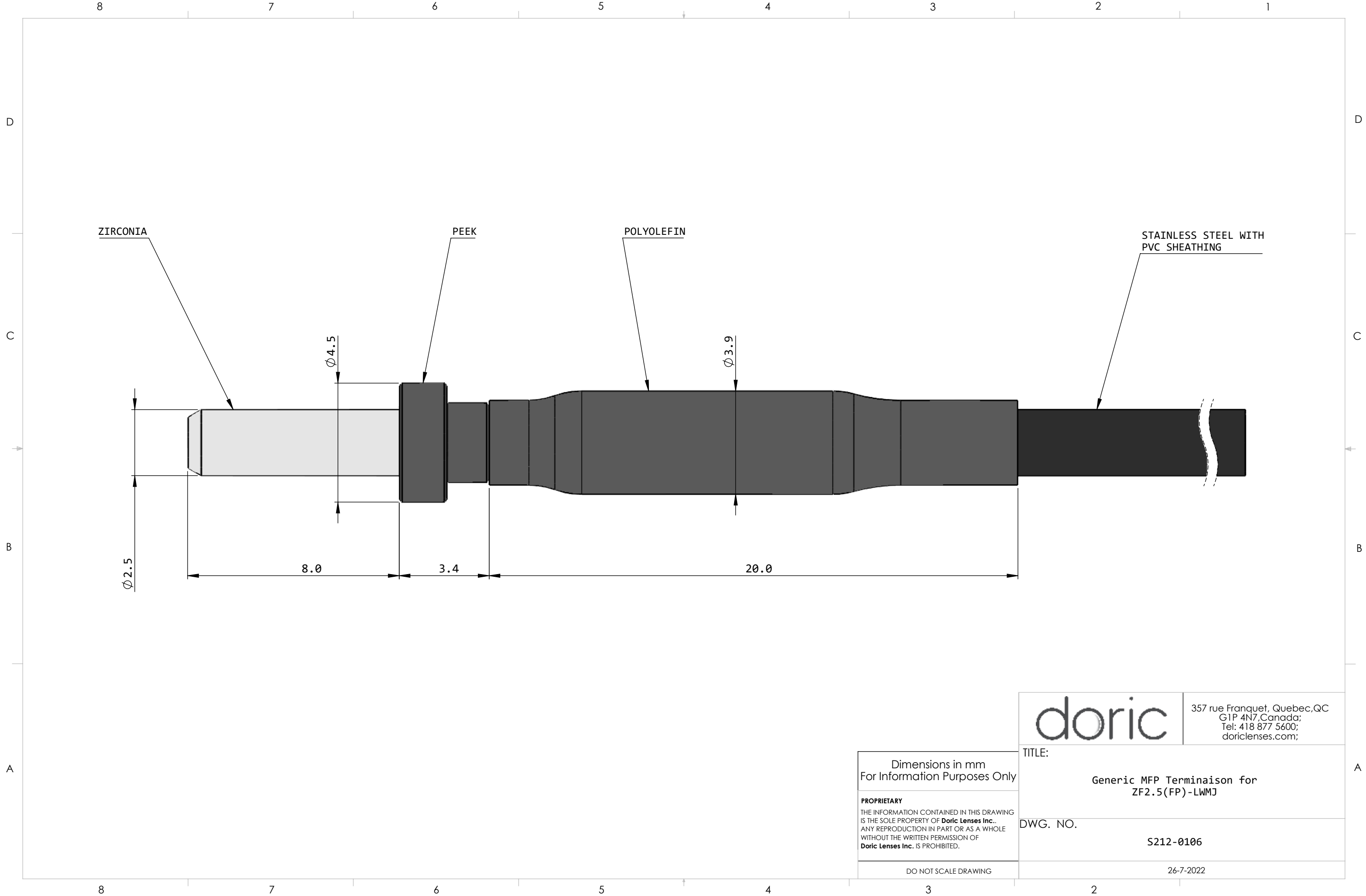
doric

357 rue Franquet, Quebec, QC
G1P 4N7, Canada;
Tel: 418 877 5600;
doriclenses.com;

TITLE:
**Generic MFP Terminaison for
ZF2.5(FP)-3000**

DWG. NO.
S212-0105

5-8-2022



ZIRCONIA

PEEK

POLYOLEFIN

STAINLESS STEEL WITH PVC SHEATHING

$\phi 4.5$


$\phi 3.9$

$\phi 2.5$

8.0

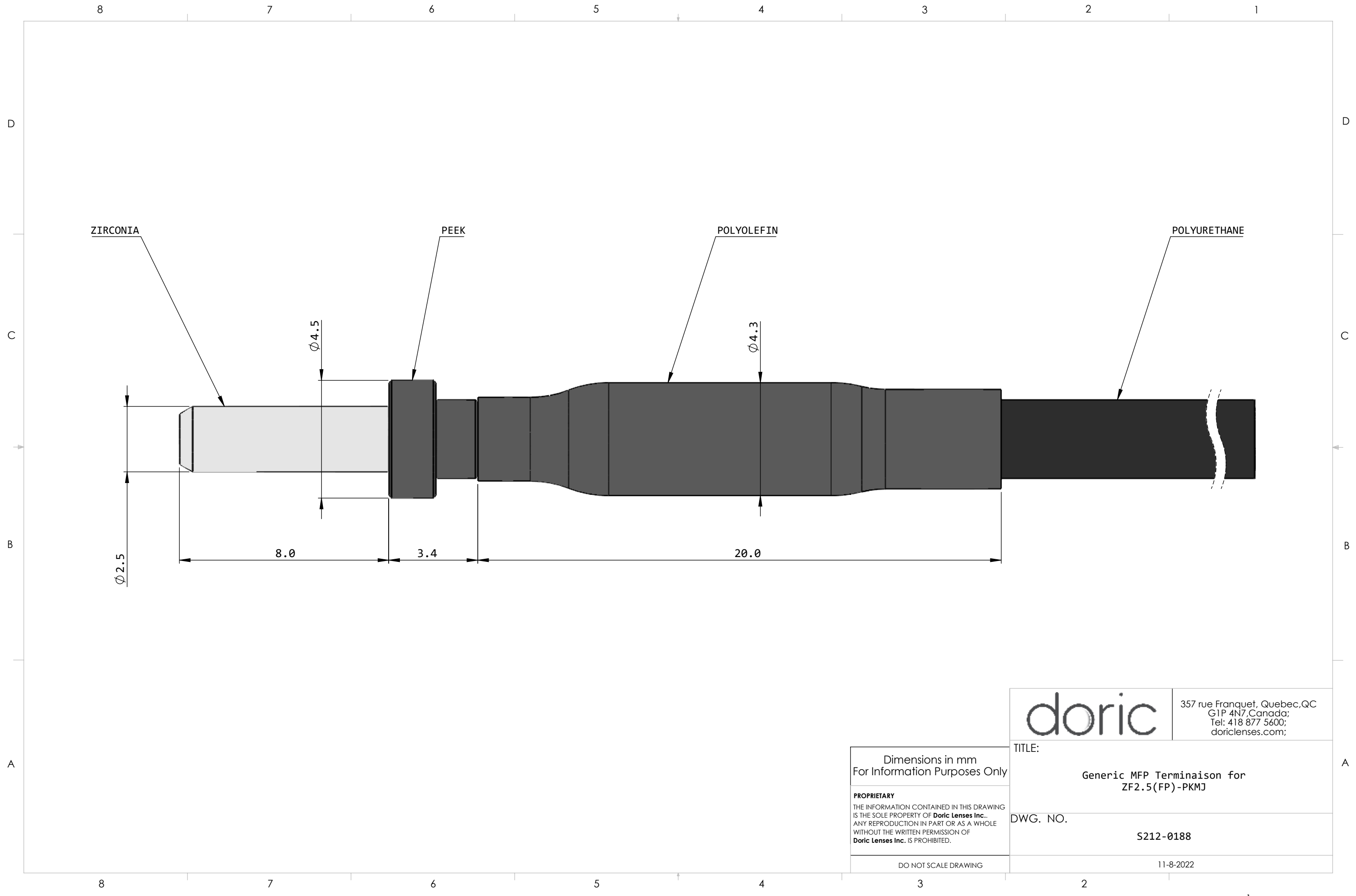
3.4

20.0

	357 rue Franquet, Quebec, QC G1P 4N7, Canada; Tel: 418 877 5600; doriclenses.com;
	TITLE: Generic MFP Terminaison for ZF2.5(FP)-LWMJ
DWG. NO.	S212-0106
DO NOT SCALE DRAWING	26-7-2022

Dimensions in mm
For Information Purposes Only


PROPRIETARY
THE INFORMATION CONTAINED IN THIS DRAWING IS THE SOLE PROPERTY OF **Doric Lenses Inc.** ANY REPRODUCTION IN PART OR AS A WHOLE WITHOUT THE WRITTEN PERMISSION OF **Doric Lenses Inc.** IS PROHIBITED.

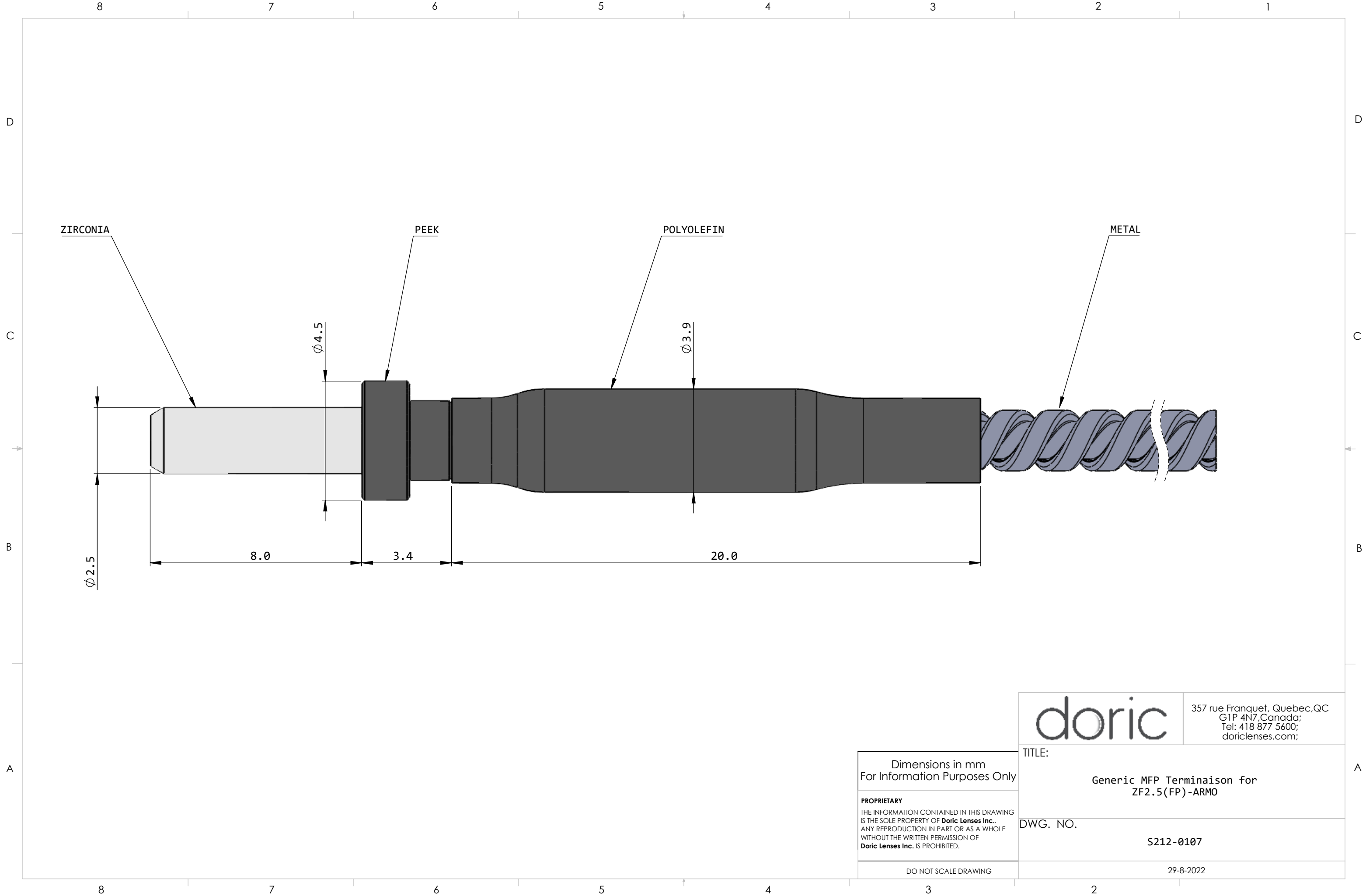


Dimensions in mm
For Information Purposes Only

PROPRIETARY
THE INFORMATION CONTAINED IN THIS DRAWING IS THE SOLE PROPERTY OF **Doric Lenses Inc.** ANY REPRODUCTION IN PART OR AS A WHOLE WITHOUT THE WRITTEN PERMISSION OF **Doric Lenses Inc.** IS PROHIBITED.

DO NOT SCALE DRAWING

	357 rue Franquet, Quebec, QC G1P 4N7, Canada; Tel: 418 877 5600; doriclenses.com;
	TITLE: <p style="text-align: center;">Generic MFP Terminaison for ZF2.5(FP)-PKMJ</p>
	DWG. NO. <p style="text-align: center;">S212-0188</p>
11-8-2022	



ZIRCONIA

PEEK

POLYOLEFIN

METAL

$\varnothing 4.5$

$\varnothing 3.9$

$\varnothing 2.5$

8.0

3.4

20.0

doric

357 rue Franquet, Quebec, QC
G1P 4N7, Canada;
Tel: 418 877 5600;
doriclenses.com;

Dimensions in mm
For Information Purposes Only

PROPRIETARY
THE INFORMATION CONTAINED IN THIS DRAWING
IS THE SOLE PROPERTY OF **Doric Lenses Inc.**
ANY REPRODUCTION IN PART OR AS A WHOLE
WITHOUT THE WRITTEN PERMISSION OF
Doric Lenses Inc. IS PROHIBITED.

DO NOT SCALE DRAWING

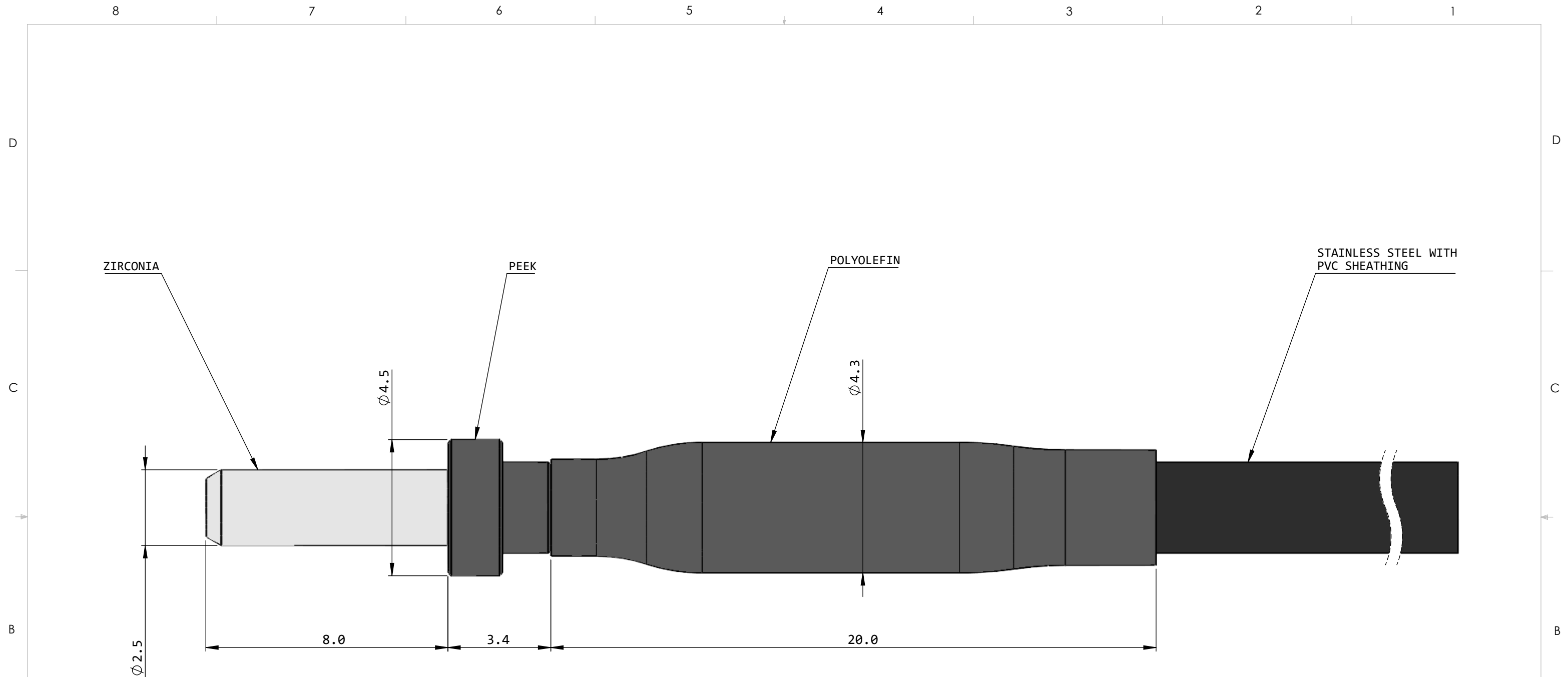
TITLE:

Generic MFP Termination for
ZF2.5(FP)-ARMO

DWG. NO.

S212-0107

29-8-2022



	357 rue Franquet, Quebec, QC G1P 4N7, Canada; Tel: 418 877 5600; doriclenses.com;
	TITLE: Generic MFP Terminaison for ZF2.5(FP)-ARBK
DWG. NO.	S212-0212
DO NOT SCALE DRAWING	7-10-2022

Dimensions in mm
For Information Purposes Only

PROPRIETARY
THE INFORMATION CONTAINED IN THIS DRAWING IS THE SOLE PROPERTY OF **Doric Lenses Inc.** ANY REPRODUCTION IN PART OR AS A WHOLE WITHOUT THE WRITTEN PERMISSION OF **Doric Lenses Inc.** IS PROHIBITED.