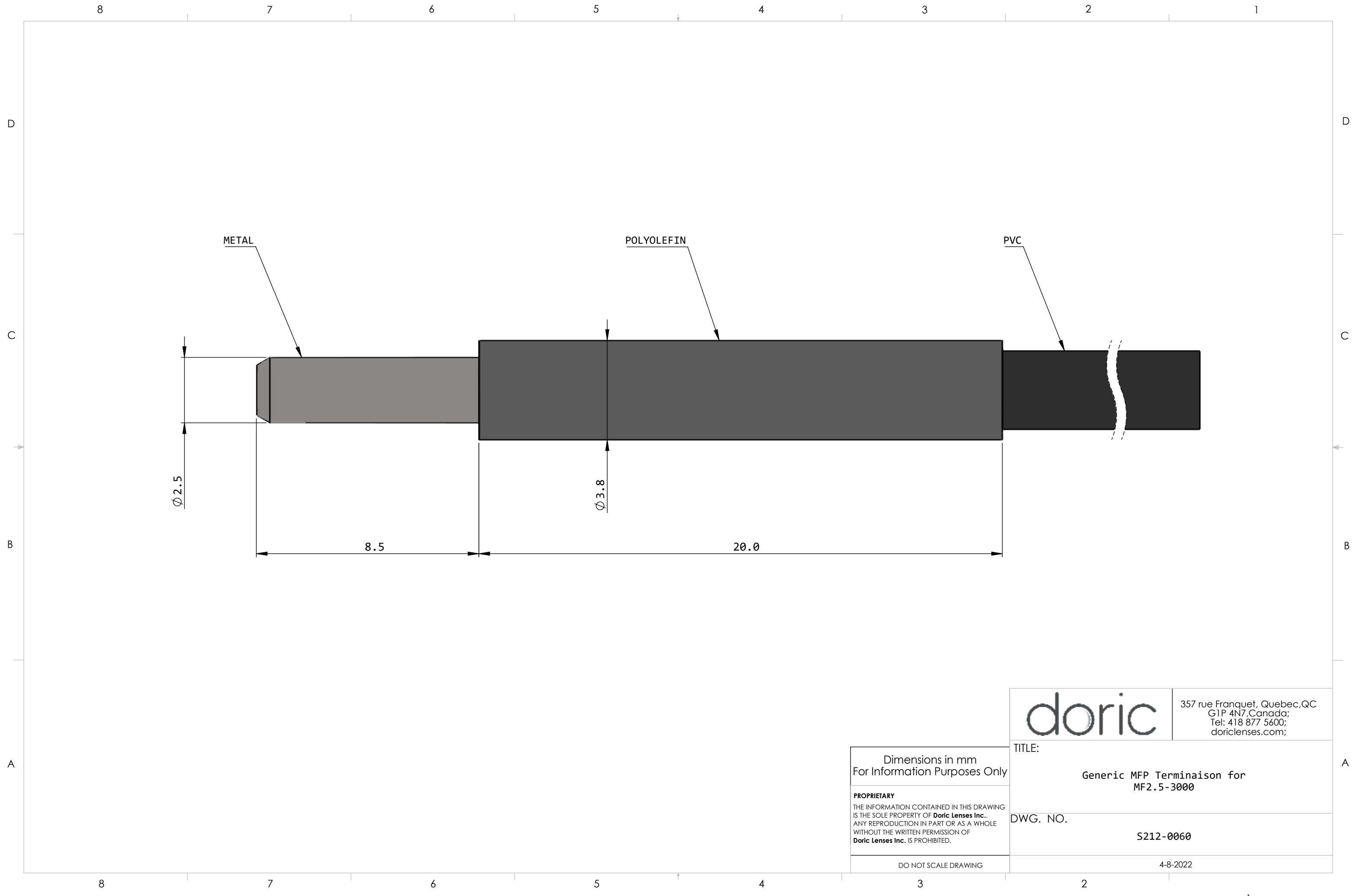


<p>doric</p> <p>357 rue Franquet, Quebec, QC G1P 4N7, Canada; Tel: 418 877 5600; doriclenses.com;</p>	TITLE:
	<p>Generic MFP Terminaison for MF2.5-1100 and less</p>
	DWG. NO.
	<p>S212-0058</p>
	<p>10-2-2022</p>

Dimensions in mm
For Information Purposes Only

PROPRIETARY
THE INFORMATION CONTAINED IN THIS DRAWING
IS THE SOLE PROPERTY OF **Doric Lenses Inc.**..
ANY REPRODUCTION IN PART OR AS A WHOLE
WITHOUT THE WRITTEN PERMISSION OF
Doric Lenses Inc. IS PROHIBITED.

DO NOT SCALE DRAWING



METAL

POLYOLEFIN

PVC

Ø 2.5

Ø 3.8

8.5

20.0

doric

357 rue Franquet, Quebec, QC
G1P 4N7, Canada;
Tel: 418 877 5600;
doriclenses.com;

Dimensions in mm
For Information Purposes Only

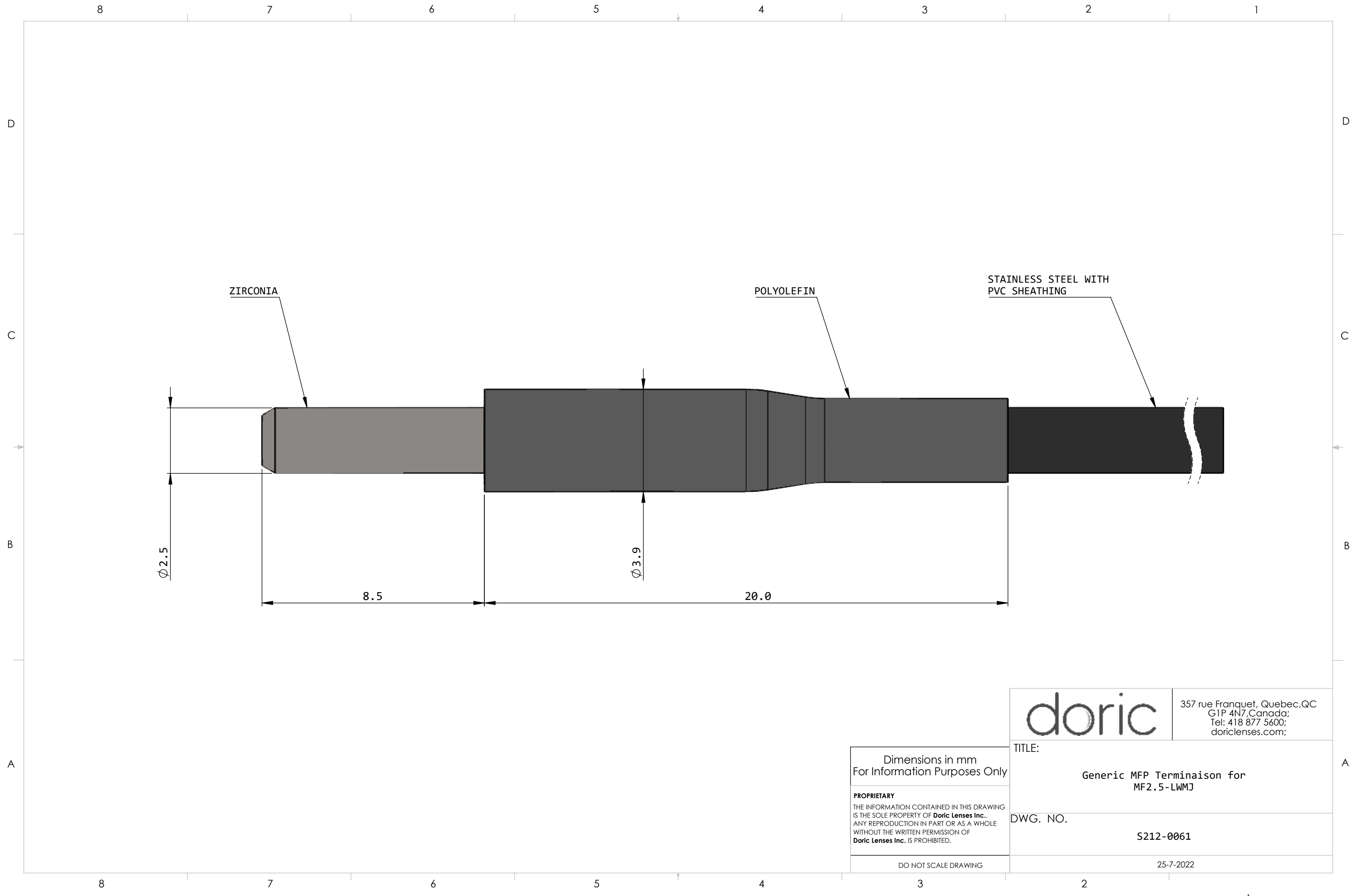
PROPRIETARY
THE INFORMATION CONTAINED IN THIS DRAWING
IS THE SOLE PROPERTY OF **Doric Lenses Inc.**..
ANY REPRODUCTION IN PART OR AS A WHOLE
WITHOUT THE WRITTEN PERMISSION OF
Doric Lenses Inc. IS PROHIBITED.


DO NOT SCALE DRAWING

TITLE:
Generic MFP Termination for
MF2.5-3000

DWG. NO.
S212-0060

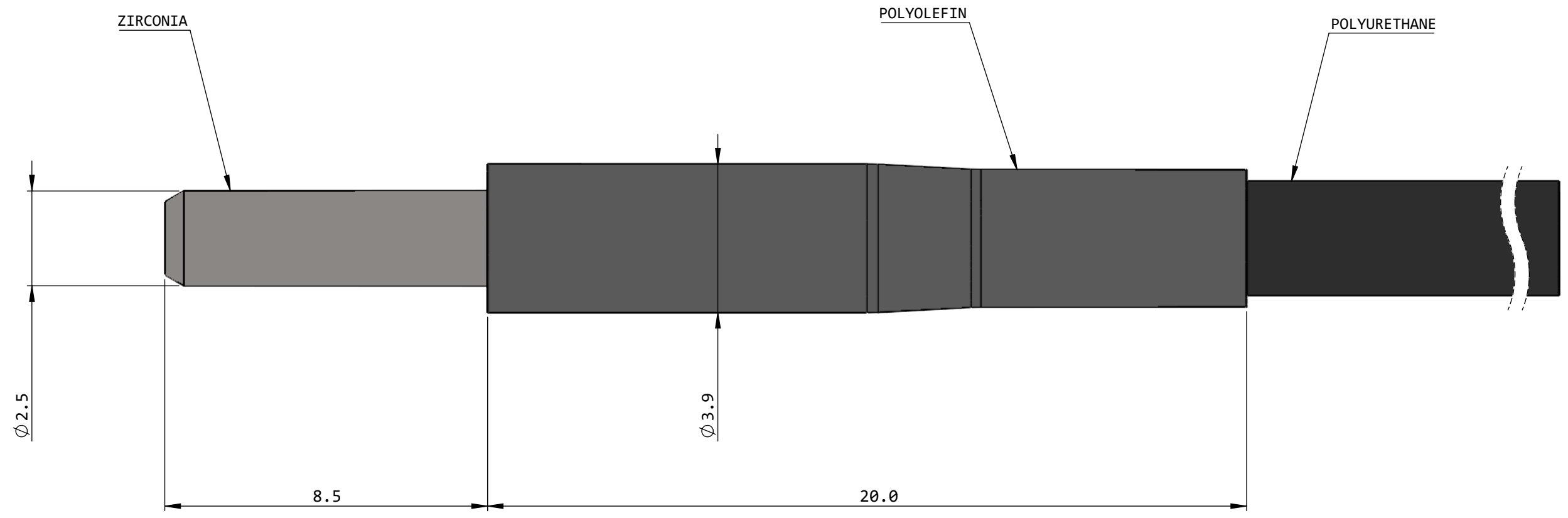
4-8-2022




	357 rue Franquet, Quebec, QC G1P 4N7, Canada; Tel: 418 877 5600; doriclenses.com;
	TITLE: Generic MFP Terminaison for MF2.5-LWMJ
DWG. NO.	S212-0061
DO NOT SCALE DRAWING	25-7-2022

Dimensions in mm
 For Information Purposes Only

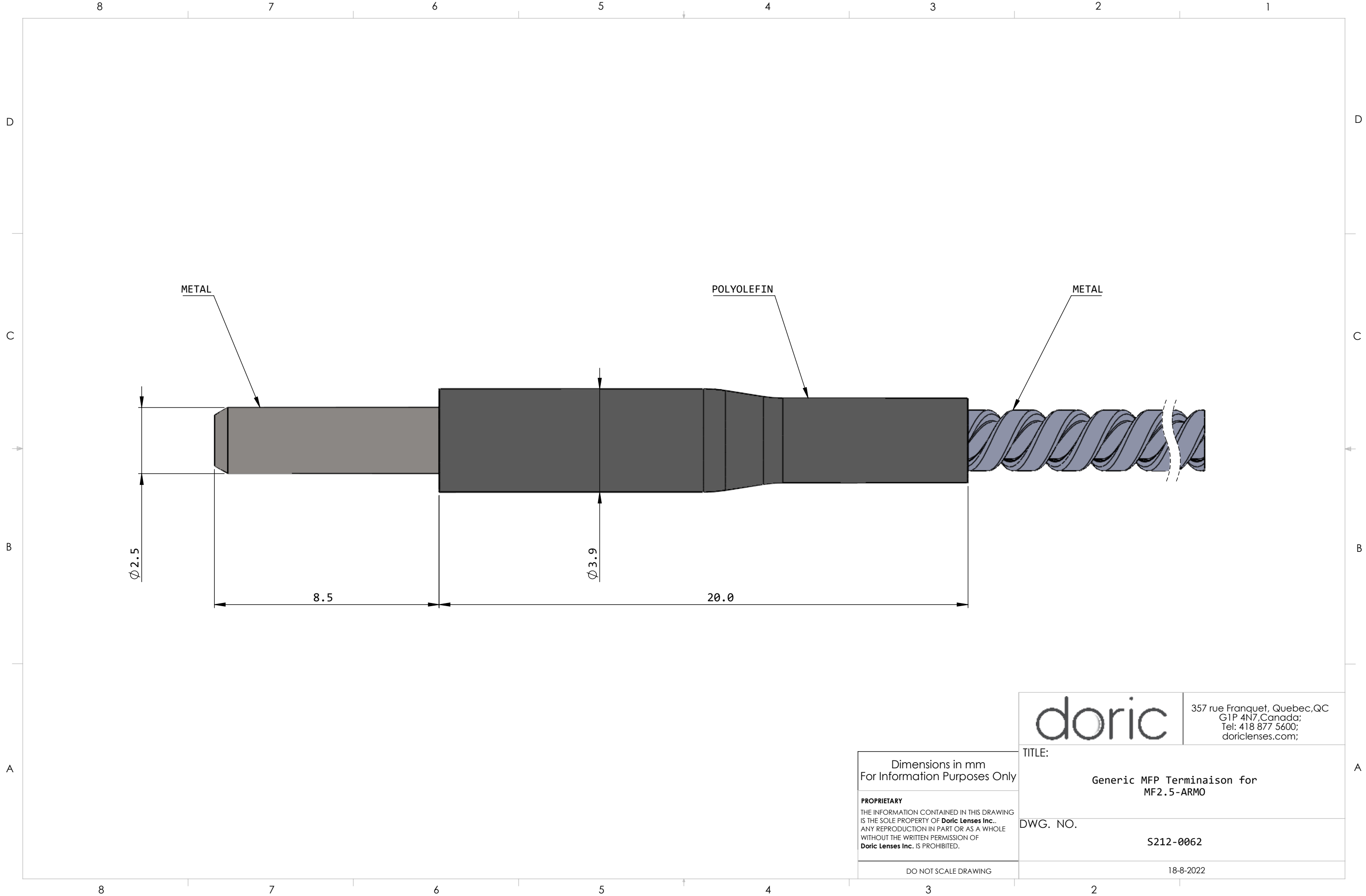
PROPRIETARY
 THE INFORMATION CONTAINED IN THIS DRAWING
 IS THE SOLE PROPERTY OF **Doric Lenses Inc.**..
 ANY REPRODUCTION IN PART OR AS A WHOLE
 WITHOUT THE WRITTEN PERMISSION OF
Doric Lenses Inc. IS PROHIBITED.



	357 rue Franquet, Quebec, QC G1P 4N7, Canada; Tel: 418 877 5600; doriclenses.com;
	TITLE: Generic MFP Terminaison for MF2.5-PKMJ
DWG. NO.	S212-0180
DO NOT SCALE DRAWING	10-8-2022

Dimensions in mm
 For Information Purposes Only

PROPRIETARY
 THE INFORMATION CONTAINED IN THIS DRAWING
 IS THE SOLE PROPERTY OF **Doric Lenses Inc.**
 ANY REPRODUCTION IN PART OR AS A WHOLE
 WITHOUT THE WRITTEN PERMISSION OF
Doric Lenses Inc. IS PROHIBITED.



Dimensions in mm
For Information Purposes Only

PROPRIETARY
THE INFORMATION CONTAINED IN THIS DRAWING
IS THE SOLE PROPERTY OF **Doric Lenses Inc.**..
ANY REPRODUCTION IN PART OR AS A WHOLE
WITHOUT THE WRITTEN PERMISSION OF
Doric Lenses Inc. IS PROHIBITED.

DO NOT SCALE DRAWING

doric

357 rue Franquet, Quebec, QC
G1P 4N7, Canada;
Tel: 418 877 5600;
doriclenses.com;

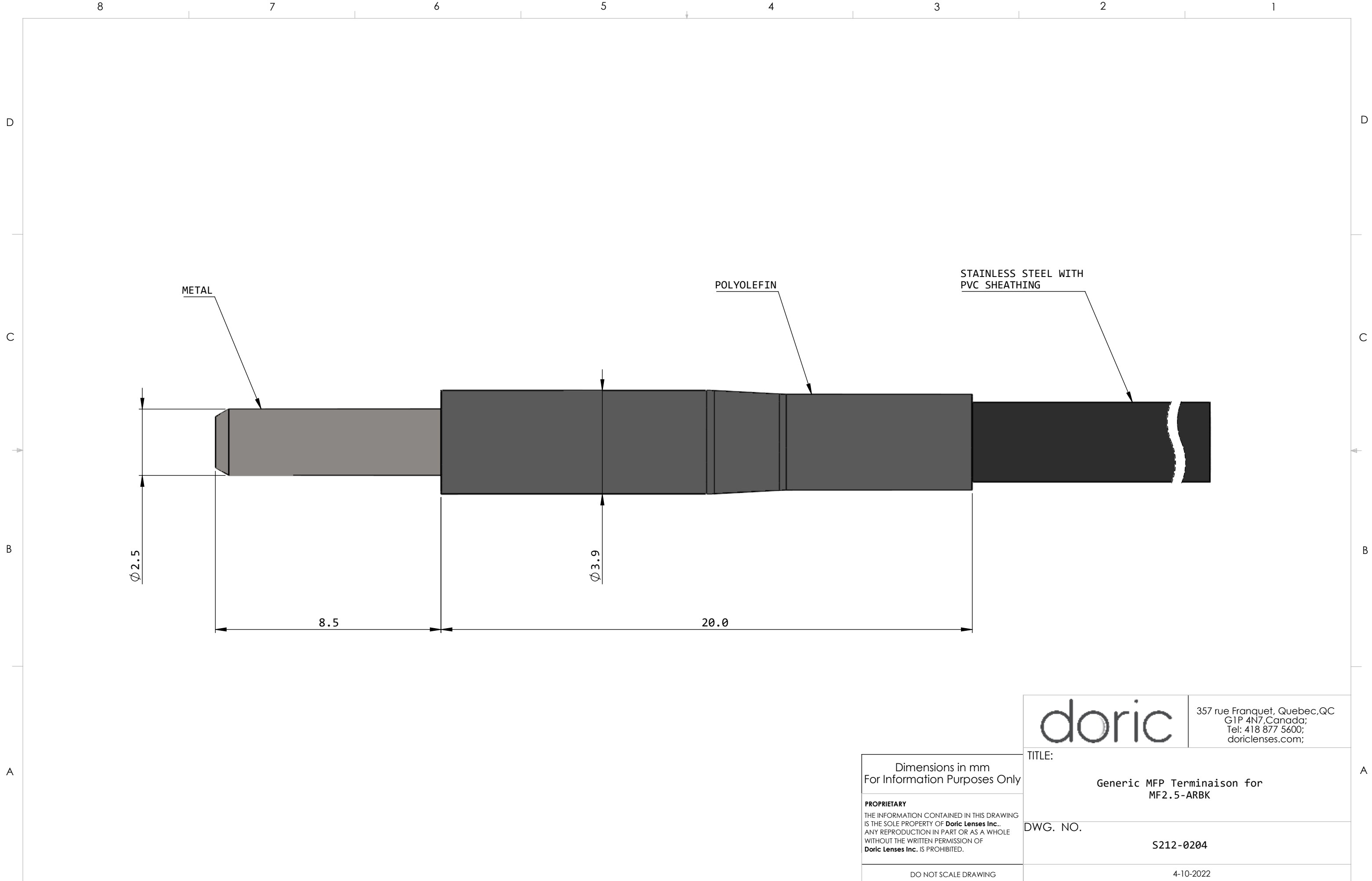
TITLE:

Generic MFP Terminaison for
MF2.5-ARMO

DWG. NO.

S212-0062

18-8-2022



METAL

POLYOLEFIN

STAINLESS STEEL WITH
PVC SHEATHING

$\varnothing 2.5$

$\varnothing 3.9$

8.5

20.0

doric

357 rue Franquet, Quebec, QC
G1P 4N7, Canada;
Tel: 418 877 5600;
doriclenses.com;

Dimensions in mm
For Information Purposes Only

PROPRIETARY
THE INFORMATION CONTAINED IN THIS DRAWING
IS THE SOLE PROPERTY OF **Doric Lenses Inc.**..
ANY REPRODUCTION IN PART OR AS A WHOLE
WITHOUT THE WRITTEN PERMISSION OF
Doric Lenses Inc. IS PROHIBITED.

DO NOT SCALE DRAWING

TITLE:

Generic MFP Terminaison for
MF2.5-ARBK

DWG. NO.

S212-0204

4-10-2022