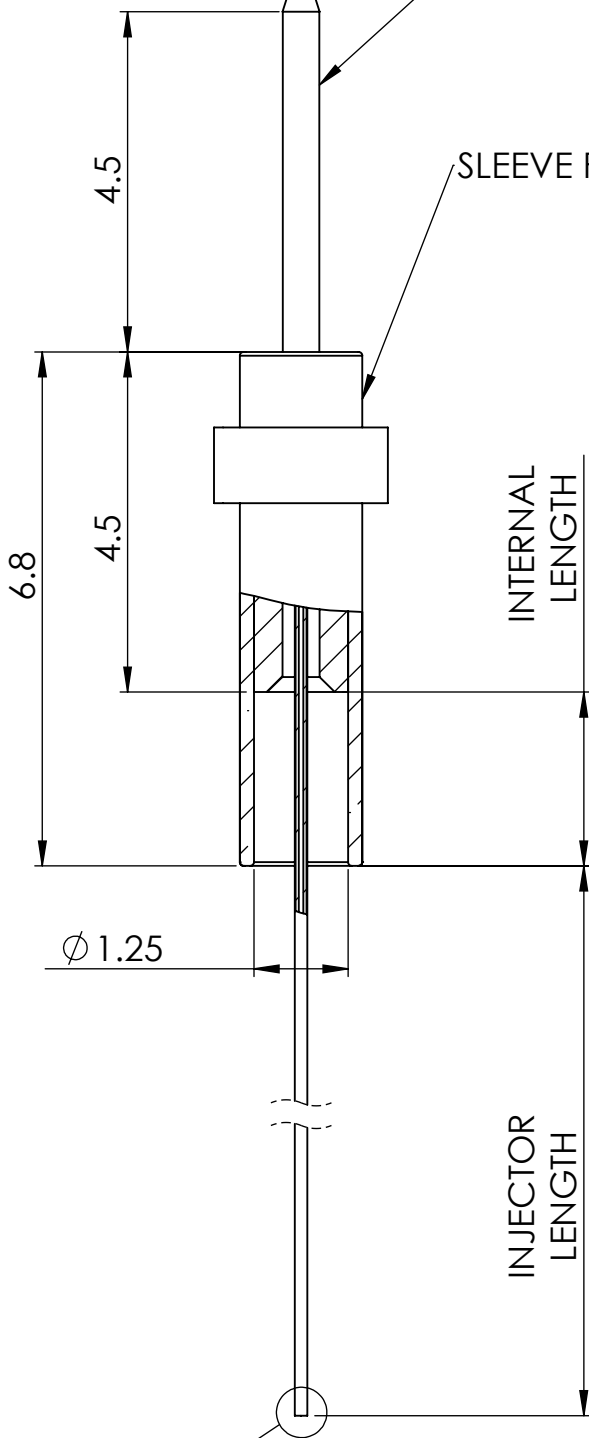


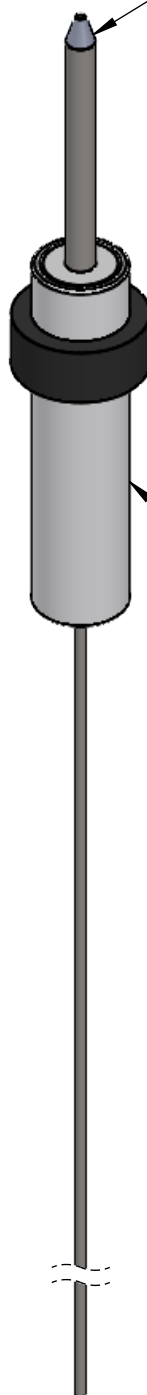
THROUGH HOLE 100 μ m

STAINLESS STEEL
TUBE 25 GA
OD=0.485

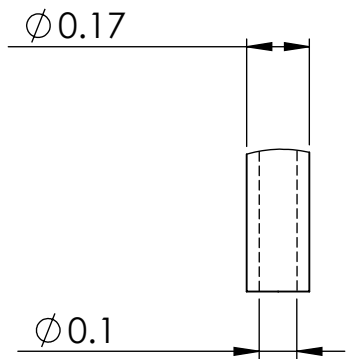
SLEEVE FOR ZF1.25



EPOXY GLUE BEVEL



ZIRCONIA (ZrO2)



Dimensions in mm
For Information Purposes Only

PROPRIETARY
THE INFORMATION CONTAINED IN THIS DRAWING IS THE SOLE PROPERTY OF **Doric Lenses Inc.** ANY REPRODUCTION IN PART OR AS A WHOLE WITHOUT THE WRITTEN PERMISSION OF **Doric Lenses Inc.** IS PROHIBITED.

DO NOT SCALE DRAWING

doric		357 rue Franquet, Quebec, QC G1P 4N7, Canada; Tel: 418 877 5600; doriclenses.com;	
TITLE:	FI_DiOFC_L		
DWG. NO.	B286-xxxx		
	12-3-2018		