

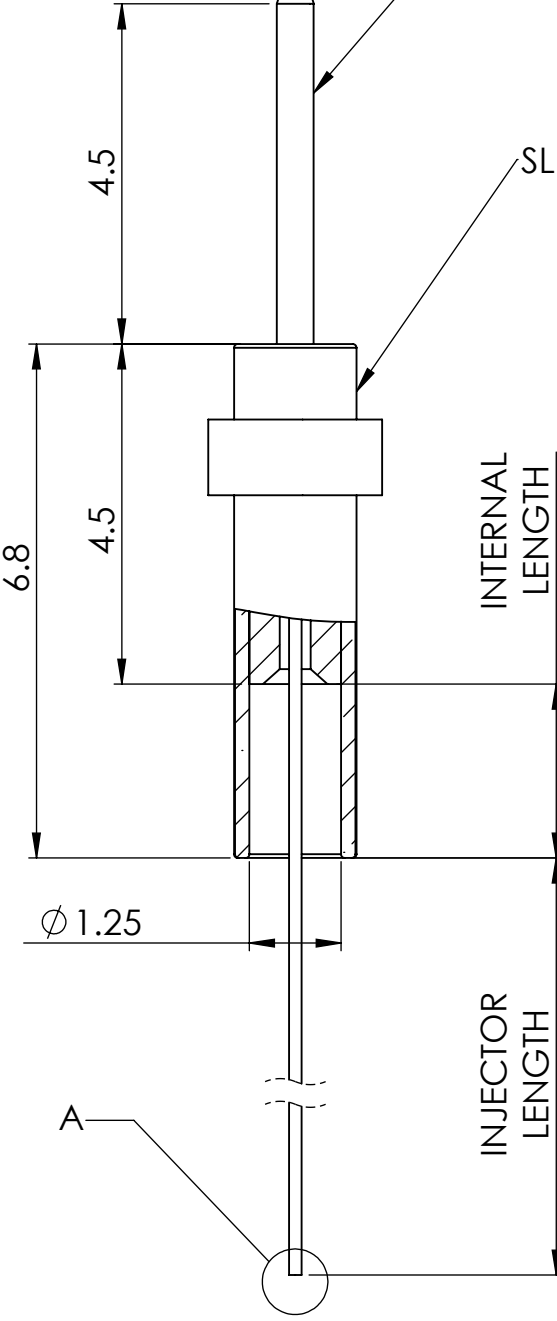
THROUGH HOLE 100  $\mu\text{m}$

STAINLESS STEEL  
TUBE 25 GA  
OD=0.485

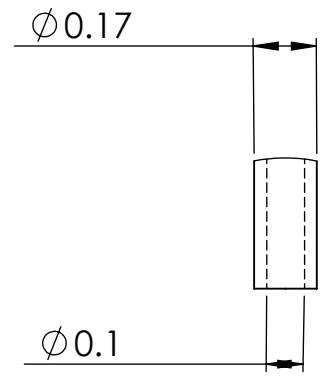
EPOXY GLUE BEVEL

SLEEVE FOR ZF1.25


ZIRCONIA (ZrO<sub>2</sub>)



FI\_OmFC\_ZF



DETAIL A  
SCALE 50 : 1

	357 rue Franquet, Quebec, QC G1P 4N7, Canada; Tel: 418 877 5600; doriclenses.com;
	TITLE: <p style="text-align: center;">FI_OmFC_ZF</p>
DWG. NO.	<p style="text-align: center;">B286-xxxx</p>
DO NOT SCALE DRAWING	<p style="text-align: center;">6-6-2017</p>

Dimensions in mm  
For Information Purposes Only

**PROPRIETARY**  
 THE INFORMATION CONTAINED IN THIS DRAWING  
 IS THE SOLE PROPERTY OF Doric Lenses Inc..  
 ANY REPRODUCTION IN PART OR AS A WHOLE  
 WITHOUT THE WRITTEN PERMISSION OF  
 Doric Lenses Inc. IS PROHIBITED.