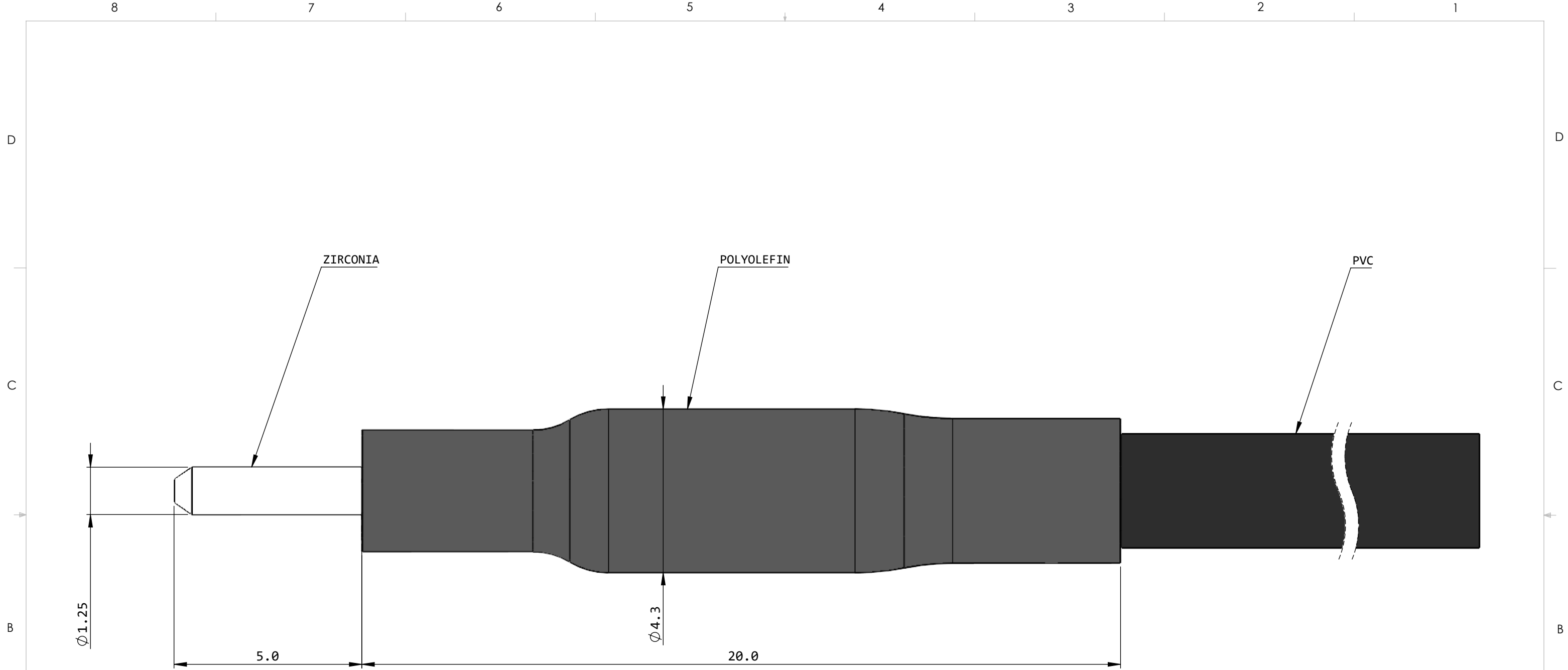


|          |  |
|----------|--|
|          | 357 rue Franquet, Quebec, QC<br>G1P 4N7, Canada;<br>Tel: 418 877 5600;<br>doriclenses.com; |
| TITLE:   | Generic MFP Terminaison for  |
|          | ZF1.25(FP)-1100 and less   |
| DWG. NO. | S212-0093  |
|          | 16-9-2022  |

Dimensions in mm  
For Information Purposes Only

**PROPRIETARY**  
THE INFORMATION CONTAINED IN THIS DRAWING IS THE SOLE PROPERTY OF **Doric Lenses Inc.** ANY REPRODUCTION IN PART OR AS A WHOLE WITHOUT THE WRITTEN PERMISSION OF **Doric Lenses Inc.** IS PROHIBITED.


DO NOT SCALE DRAWING

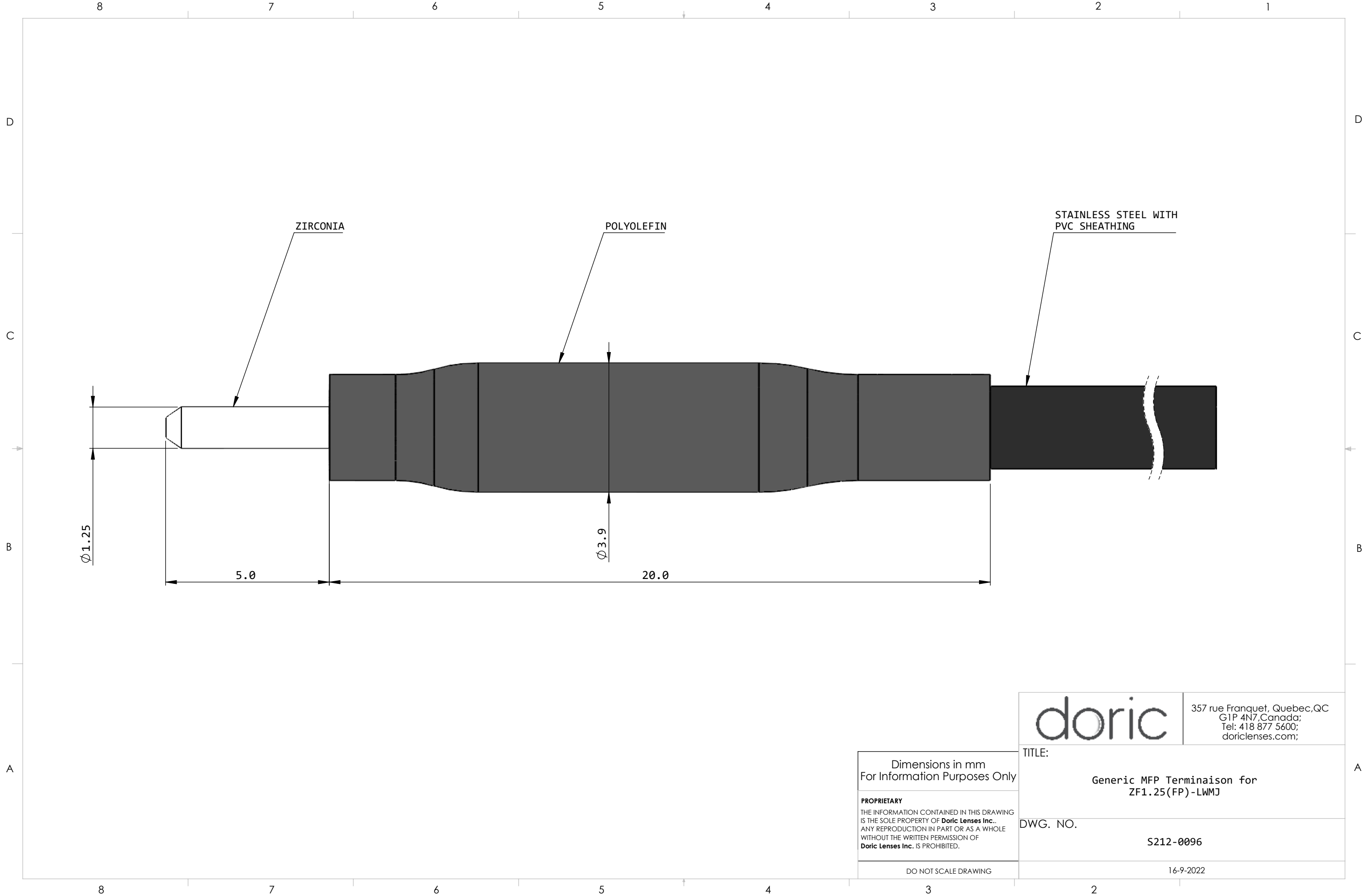


Dimensions in mm  
For Information Purposes Only

**PROPRIETARY**  
THE INFORMATION CONTAINED IN THIS DRAWING IS THE SOLE PROPERTY OF **Doric Lenses Inc.** ANY REPRODUCTION IN PART OR AS A WHOLE WITHOUT THE WRITTEN PERMISSION OF **Doric Lenses Inc.** IS PROHIBITED.

DO NOT SCALE DRAWING

|   |  |
|---|--|
|  | 357 rue Franquet, Quebec, QC<br>G1P 4N7, Canada;<br>Tel: 418 877 5600;<br>doriclenses.com; |
|   | TITLE:<br>Generic MFP Terminaison for<br>ZF1.25(FP)-3000                                   |
| DWG. NO.  | S212-0095  |
| DO NOT SCALE DRAWING  | 16-9-2022  |



Ø1.25

5.0

Ø3.9

20.0

ZIRCONIA

POLYOLEFIN

STAINLESS STEEL WITH  
PVC SHEATHING

Dimensions in mm  
For Information Purposes Only

**PROPRIETARY**  
THE INFORMATION CONTAINED IN THIS DRAWING  
IS THE SOLE PROPERTY OF **Doric Lenses Inc.**..  
ANY REPRODUCTION IN PART OR AS A WHOLE  
WITHOUT THE WRITTEN PERMISSION OF  
**Doric Lenses Inc.** IS PROHIBITED.

DO NOT SCALE DRAWING

**doric**

357 rue Franquet, Quebec, QC  
G1P 4N7, Canada;  
Tel: 418 877 5600;  
doriclenses.com;

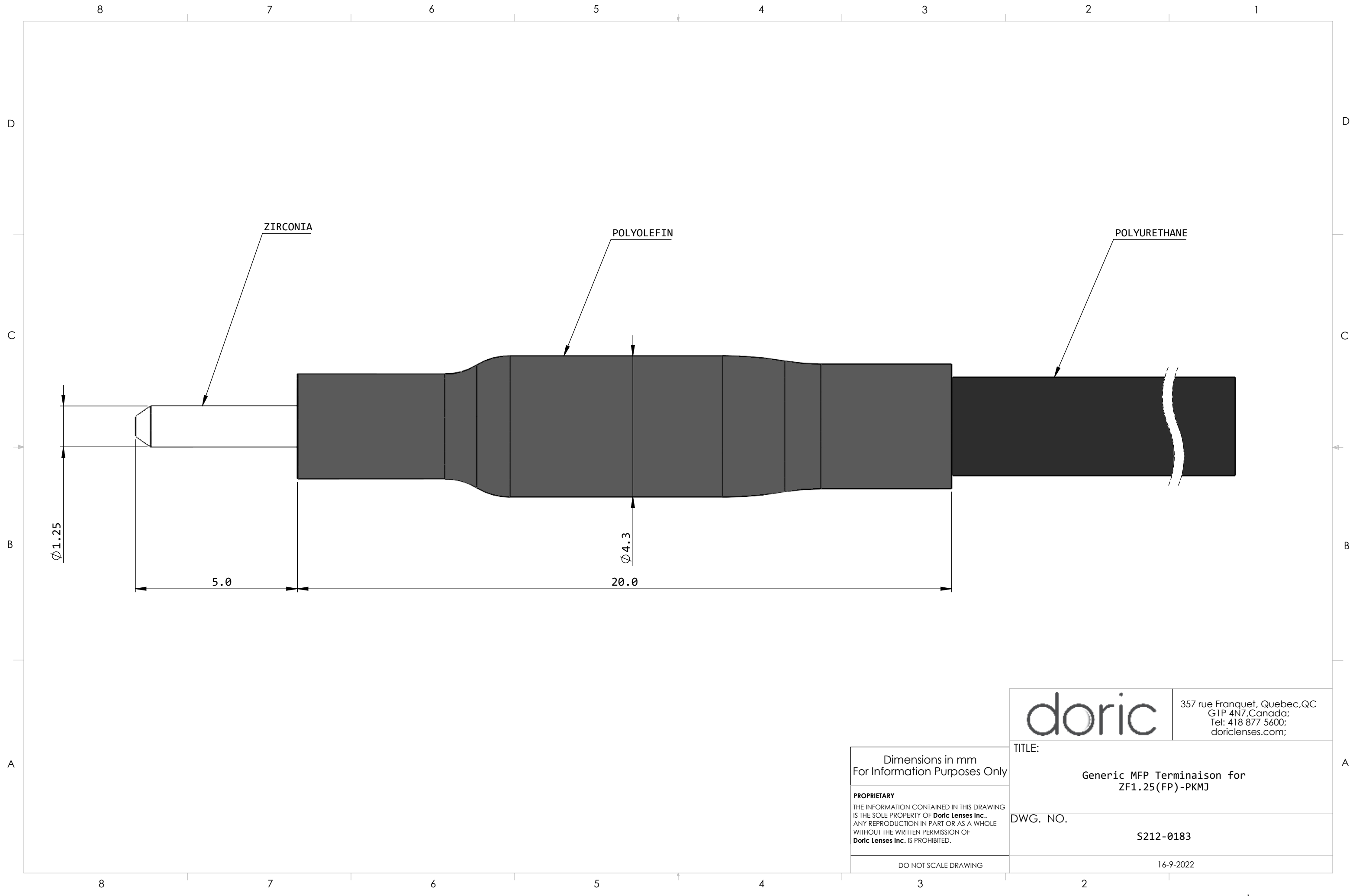
TITLE:

Generic MFP Termination for  
ZF1.25(FP)-LWMJ

DWG. NO.

S212-0096

16-9-2022



ZIRCONIA

POLYOLEFIN

POLYURETHANE

$\phi 1.25$

$\phi 4.3$


5.0

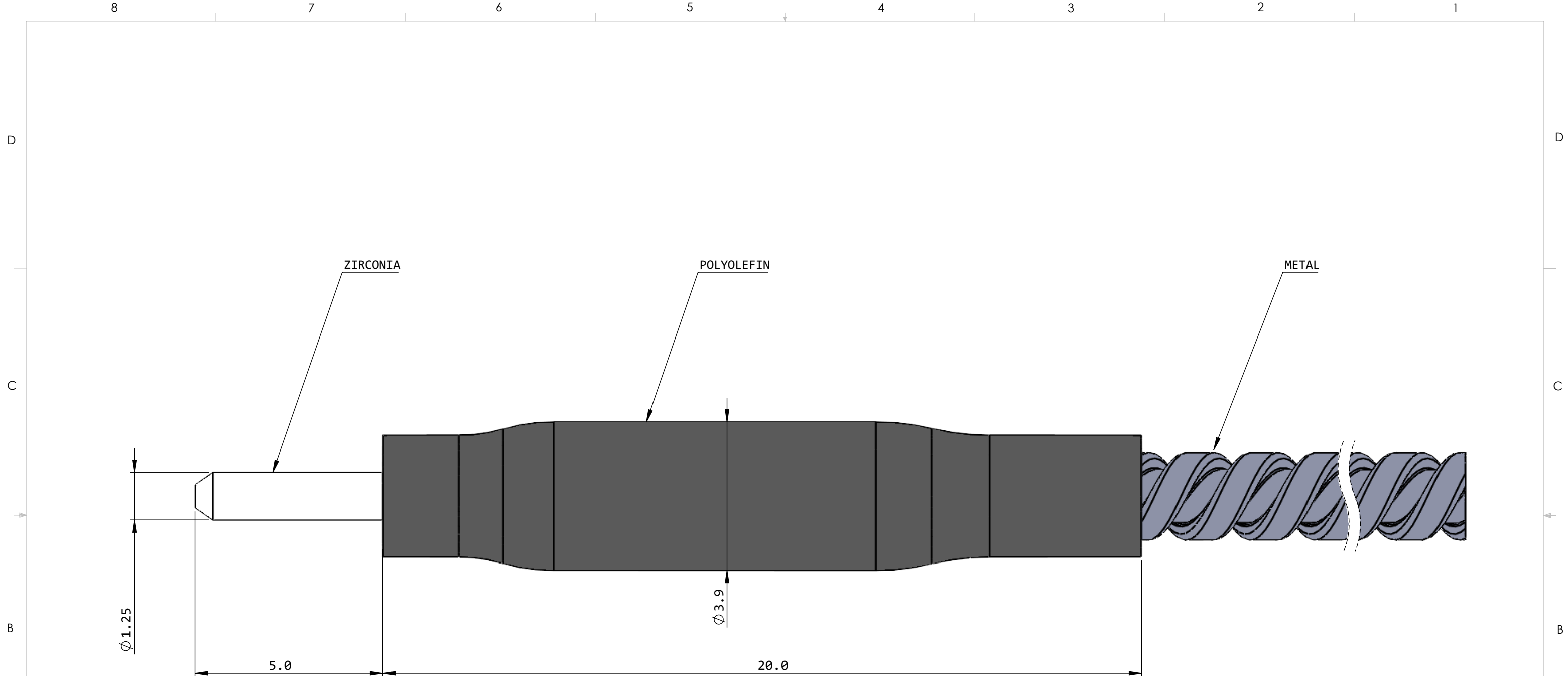
20.0

Dimensions in mm  
For Information Purposes Only

**PROPRIETARY**  
THE INFORMATION CONTAINED IN THIS DRAWING IS THE SOLE PROPERTY OF **Doric Lenses Inc.** ANY REPRODUCTION IN PART OR AS A WHOLE WITHOUT THE WRITTEN PERMISSION OF **Doric Lenses Inc.** IS PROHIBITED.

DO NOT SCALE DRAWING

|  |  |
|--|--|
|             | 357 rue Franquet, Quebec, QC<br>G1P 4N7, Canada;<br>Tel: 418 877 5600;<br>doriclenses.com; |
| TITLE:<br><br><p style="text-align: center;">Generic MFP Terminaison for<br/>ZF1.25(FP)-PKMJ</p> |  |
| DWG. NO.<br><br><p style="text-align: center;">S212-0183</p>                                     |  |
| <p style="text-align: center;">16-9-2022</p>   |  |

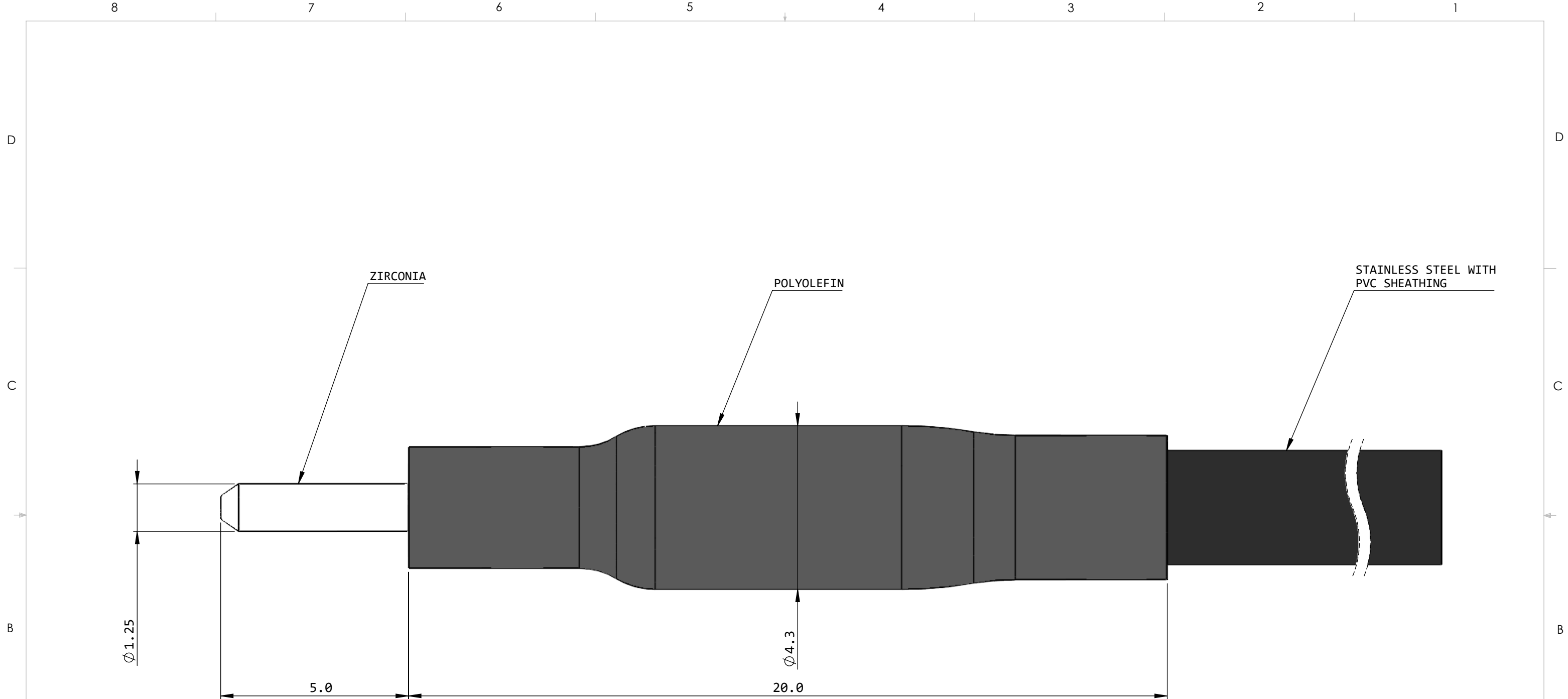



Dimensions in mm  
For Information Purposes Only

**PROPRIETARY**  
THE INFORMATION CONTAINED IN THIS DRAWING IS THE SOLE PROPERTY OF Doric Lenses Inc.. ANY REPRODUCTION IN PART OR AS A WHOLE WITHOUT THE WRITTEN PERMISSION OF Doric Lenses Inc. IS PROHIBITED.

DO NOT SCALE DRAWING

|              |  |
|--------------|--|
| <b>doric</b> | 357 rue Franquet, Quebec, QC<br>G1P 4N7, Canada;<br>Tel: 418 877 5600;<br>doriclenses.com; |
| TITLE:       | Generic MFP Terminaison for<br>ZF1.25(FP)-ARMO   |
| DWG. NO.     | S212-0097  |
|              | 16-9-2022  |



|   |  |
|---|--|
|  | 357 rue Franquet, Quebec, QC<br>G1P 4N7, Canada;<br>Tel: 418 877 5600;<br>doriclenses.com;   |
|   | TITLE:<br><p style="text-align: center;">Generic MFP Terminaison for<br/>ZF1.25(FP)-ARBK</p> |
| DWG. NO.  | <p style="text-align: center;">S212-0207</p>   |
| DO NOT SCALE DRAWING  | <p style="text-align: center;">16-9-2022</p>   |

Dimensions in mm  
For Information Purposes Only

**PROPRIETARY**  
 THE INFORMATION CONTAINED IN THIS DRAWING  
 IS THE SOLE PROPERTY OF **Doric Lenses Inc.**..  
 ANY REPRODUCTION IN PART OR AS A WHOLE  
 WITHOUT THE WRITTEN PERMISSION OF  
**Doric Lenses Inc.** IS PROHIBITED.